



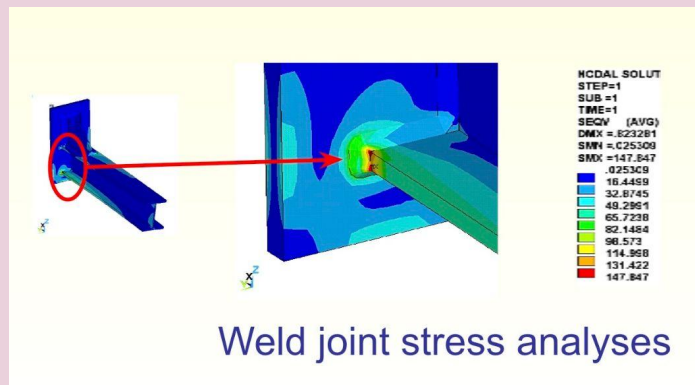
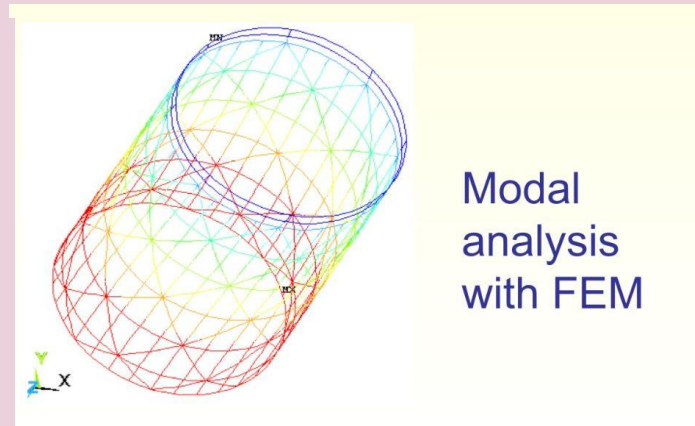
Centre for Railway Research IIT Kharagpur



Workshop on Design and Failure Analyses with ABAQUS FEA

February 18th to 22nd, 2024

- FEA (Finite element analysis) mathematical background, role of element type, element size, integration scheme, BCs, ICs, etc. on accuracy and computational complexity.
- Eigenvalue analysis (buckling, vibrations)
- Static and fatigue failure analysis
- Post processing
- Scripting for automating tasks



Coordinator

Dr. Vikranth Racherla
Professor, Mechanical Engineering
PIC Centre for Railway Research
IIT Kharagpur